

FD2RT/FD4RT25-35

NOBLELIFT Diesel Rough Terrain Forklift

2.5T&3.5T

2WD·4WD May the Force Be with You



FEATURES

Excellent Performance

Strong Gradeability up to **45%** ↑ full loaded

Ground clearance capable for most rough terrain working conditions **220mm**

Smallest turning radius **3080mm**



Durability

Choose top class C&J type hot rolled steel for mast Key electric parts with water-proof connectors, full LED lights Special clip to fasten and divide different sort of pipeline avoid contamination.

Good Visibility

- Lower instrument panel height
- Safeguard with wide view on top
- New chains & hoses layout behind mast profile
- 50° incline crosswise board of Load bracket
- Better Cooling & Air intake system
- Optimized radiating channel
- Ultra-large plate-fin type Radiator
- Excellent heat exchange system
- Optimized exhaust system layout, to decrease passive pressure
- High inlet, two-stage air filters, to improve air quality for engine

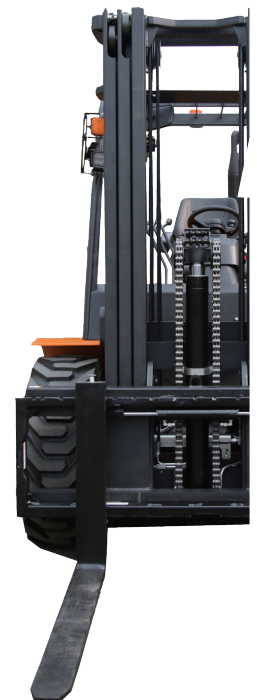
CONFIGURATIONS

Standard

- with 500mm load center
- with Japanese Mitsubishi/Yanmar engine
- with 3000mm duplex mast
- with 1070mm fork length
- with TCM technology hydraulic transmission, power shift, 2F/1R
- with differential lock, with safety system for engine starting
- with suspension seat, belt, LED lights, buzzer, horn, rotating beacon,
- with industrial pneumatic tyres

Optional

- Duplex/Triplex mast 3m-6.5m Cascade side shifter and fork-positioner
- Closed cabin/Air conditioner/Heater
- Operator Presence System--OPS system et.....



FORKLIFT SPECIFICATION

RT Series 2WD-4WD

General						
1	Type		4WD		2WD	
2	Model		FD4RT 25	FD4RT 35	FD2RT 25 FD2RT 35	
3	Power type		Diesel			
4	Rated capacity	Kg	2500	3500	2500 3500	
Characteristic&Dimension						
5	Load centre	mm	500			
6	Free lift height	mm	165	170	165 170	
7	Fork size	L×W×T	mm	1070×122×40	1070×125×45 1070×122×40 1070×125×45	
8	Fork regulating range	Min./Max.	mm	250-1310	250-1500 250-1310 250-1500	
9	Mast tilt angle	F/R	Deg	10°/12°		
10	Front overhang	mm	580	595	580 595	
11	Rear overhang	mm	605			
12	Min.ground clearance(drive steer axle)	mm	220			
13	Overall dimensions	Length to face of fork (without fork)	mm	3070	3085 3070 3085	
14		Overall width	mm	1450	1600 1557 1600	
15		Mast lowered height	mm	2230	2325 2230 2325	
16		Mast extended height (with backrest)	mm	4170	4300 4170 4300	
17		Overhead guard height	mm	2260	2280 2260 2280	
18	Turning radius (outside)	mm	3080	3080	2859 2859	
19	Min.right angle aisle width(add load length and clearance)	mm	2630	2690	2680 2690	
Performance						
20	Speed	Travel(Laden/Unladen)	Km/h	19/20	18/19 19/20 21/22	
21		Lifting(Laden/Unladen)	mm	600/620	480/500 570/590 450/470	
22		Lowering(Laden/Unladen)	mm	440		
23	Max. Drawbar pull(Laden)	KN	38	38	17 17	
24	Max. Gradeability(Laden)	%	50	45	20 16	
Tyre						
25	Tyre	Front		12-16.5-12PR	14-17.5-14PR 12-16.5-12PR 14-17.5-14PR	
26		Rear		10.0/75-15.3	10.0/75-15.3 27×10-12-12PR 27×10-12-12PR	
27	Tread	Front	mm	1125	1250 1250 1250	
28		Rear	mm	1198	1198 1205 1205	
29	Wheelbase	mm	1880	1880	1880 1880	
30	Self weight	kg	4850	5460	4500 5180	
Weight						
31	Weight Distribution	Laden	Front axle	kg	6600	7750 6000 7700
32			Rear axle	kg	750	1200 1000 980
33		Unladen	Front axle	kg	2180	2500 1810 2070
34			Rear axle	kg	2670	2960 2690 3110
Power&Transmission						
35	Battery	Voltage/Capacity	V/Ah		12/90 12/90 12/90	
36	Transmission	Manufacture		China		
37		Stage	F/R	2/1		
38	Operation pressure(For attachments)	Mpa	20			

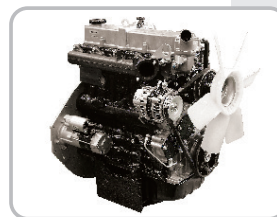
MAST SPECIFICATION

Mast	Type	Lifting Height On Fork(mm)	Overall Height mast Lowered(mm)	Free Lift On Forks(mm)		Front Overhang	Mast Tilting Angle Front/Rear	Capacity At Max. Height(kg)			
				With Bracket	Without Bracket			Without Side Shift Carriage	With Side Shift Carriage		
Wide view 2-stage mast	3.00m	FD2RT/4RT25	3000	2230	165	165	580	10/12°	2500	2500	
		FD2RT/4RT35		2325	170	170	595	10/12°	3500	3300	
	3.30m	FD2RT/4RT25	3300	2380	165	165	580	10/12°	2500	2500	
		FD2RT/4RT35		2475	170	170	595	10/12°	3500	3300	
	3.50m	FD2RT/4RT25	3500	2485	165	165	580	10/12°	2500	2500	
		FD2RT/4RT35		2575	170	170	595	10/12°	3500	3200	
	4.00m	FD2RT/4RT25	4000	2780	165	165	580	10/12°	2500	2500	
		FD2RT/4RT35		2875	170	170	595	10/12°	3400	3100	
	4.5m	FD2RT/4RT25	4500	3030	165	165	580	10/12°	2200	2100	
		FD2RT/4RT35		3125	170	170	595	10/12°	3100	2900	
	Full free 3-stage mast	4.00m	FD2RT/4RT25	4000	2075	893	1338	585	10/12°	2500	2400
			FD2RT/4RT35		2200	895	1340	615	10/12°	3400	3100
4.35m		FD2RT/4RT25	4350	2200	1018	1463	585	10/12°	2400	2200	
		FD2RT/4RT35		2325	1020	1466	615	10/12°	3000	2900	
4.70m		FD2RT/4RT25	4700	2315	1133	1578	585	10/12°	2100	1900	
		FD2RT/4RT35		2440	1135	1580	615	10/12°	2800	2500	
5m		FD2RT/4RT25	5000	2450	1268	1716	585	6/6°	1900	1600	
		FD2RT/4RT35		2575	1270	1715	615	6/6°	2600	2300	
6m		FD2RT/4RT25	6000	2800	1618	2063	585	6/6°	1200	800	
		FD2RT/4RT35		2925	1620	2065	615	6/6°	1900	1600	
6.5m		FD2RT/4RT25	6500	3015	1833	2278	585	6/6°	700	400	
		FD2RT/4RT35		3140	1835	2280	615	6/6°	1300	1100	



YANMAR

Type:WC3
 Model:4TNE98-BQFLC(EUIII)
 No.of cylinder:4
 BorexStroke:98x110mm
 Displacement:3.318L
 Rated output: 42.1/2300kw/r.p.m
 Rated torque: 177.6 196.3/1700N.m/r.p.m



MITSUBISHI

Type:WV3
 Model:S4S(EUIIIA)
 No.of cylinder:4
 BorexStroke:94x120mm
 Displacement:3.331L
 Rated output: 34.4/2250kw/r.p.m
 Rated torque: 169/1700N.m/r.p.m